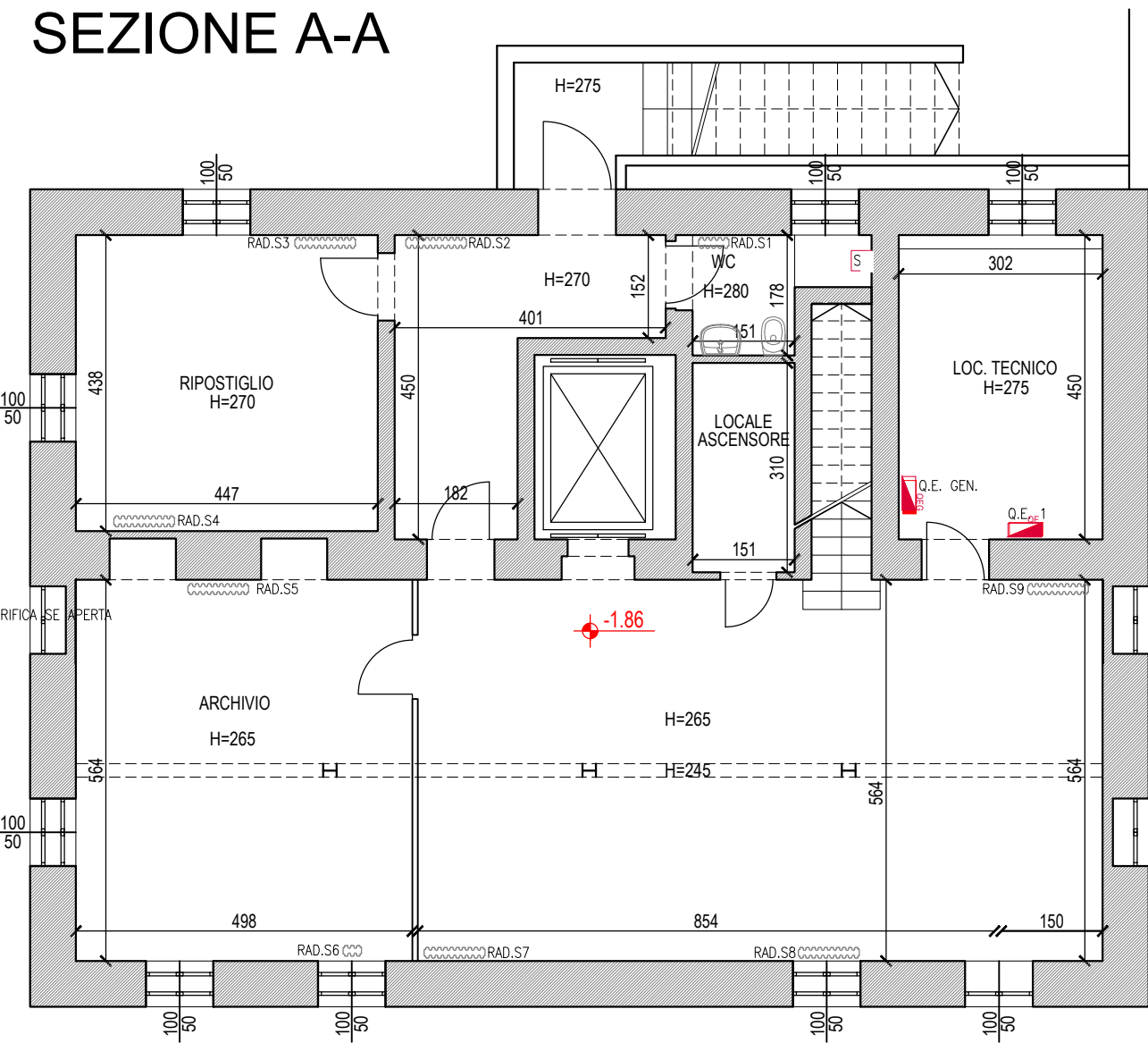
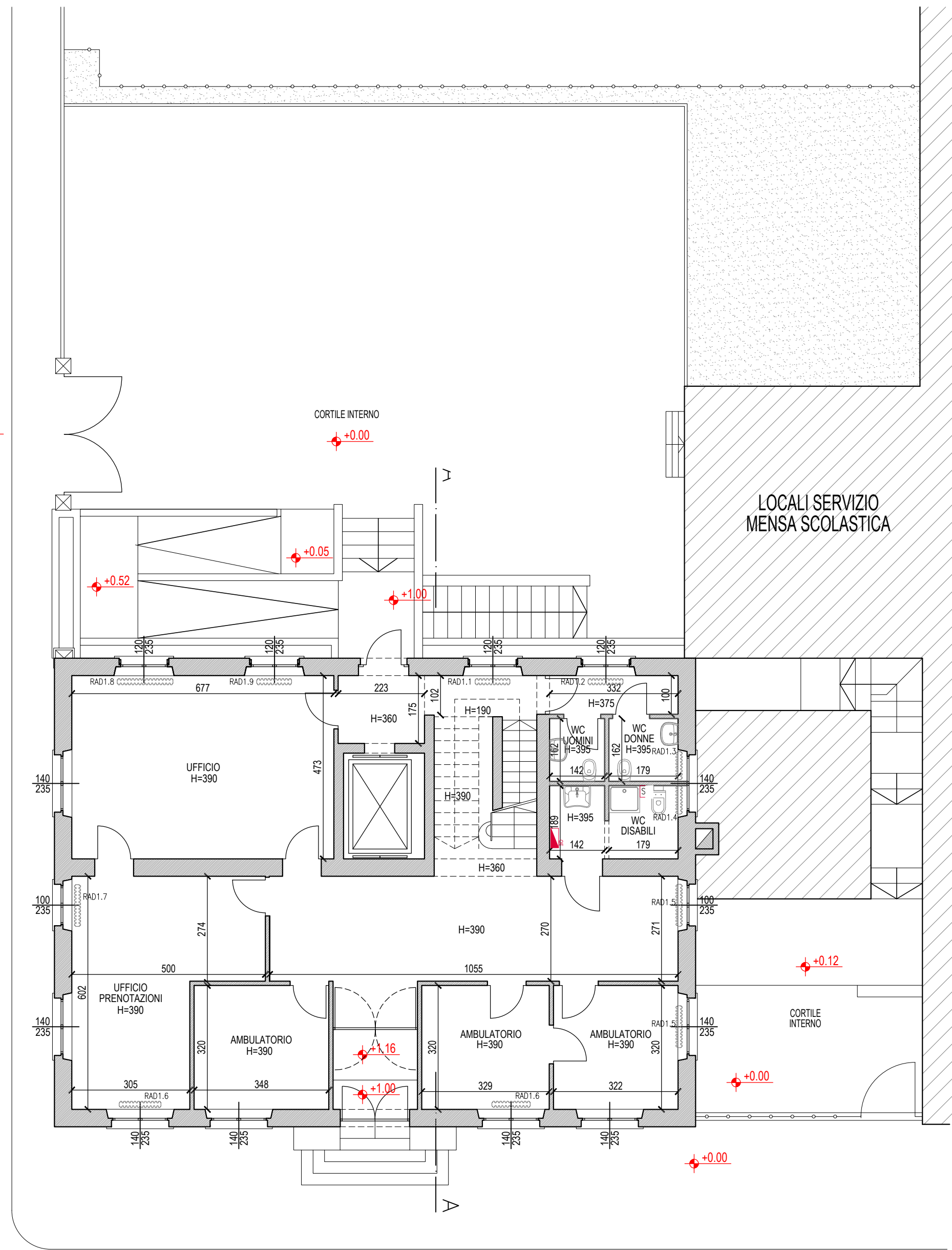


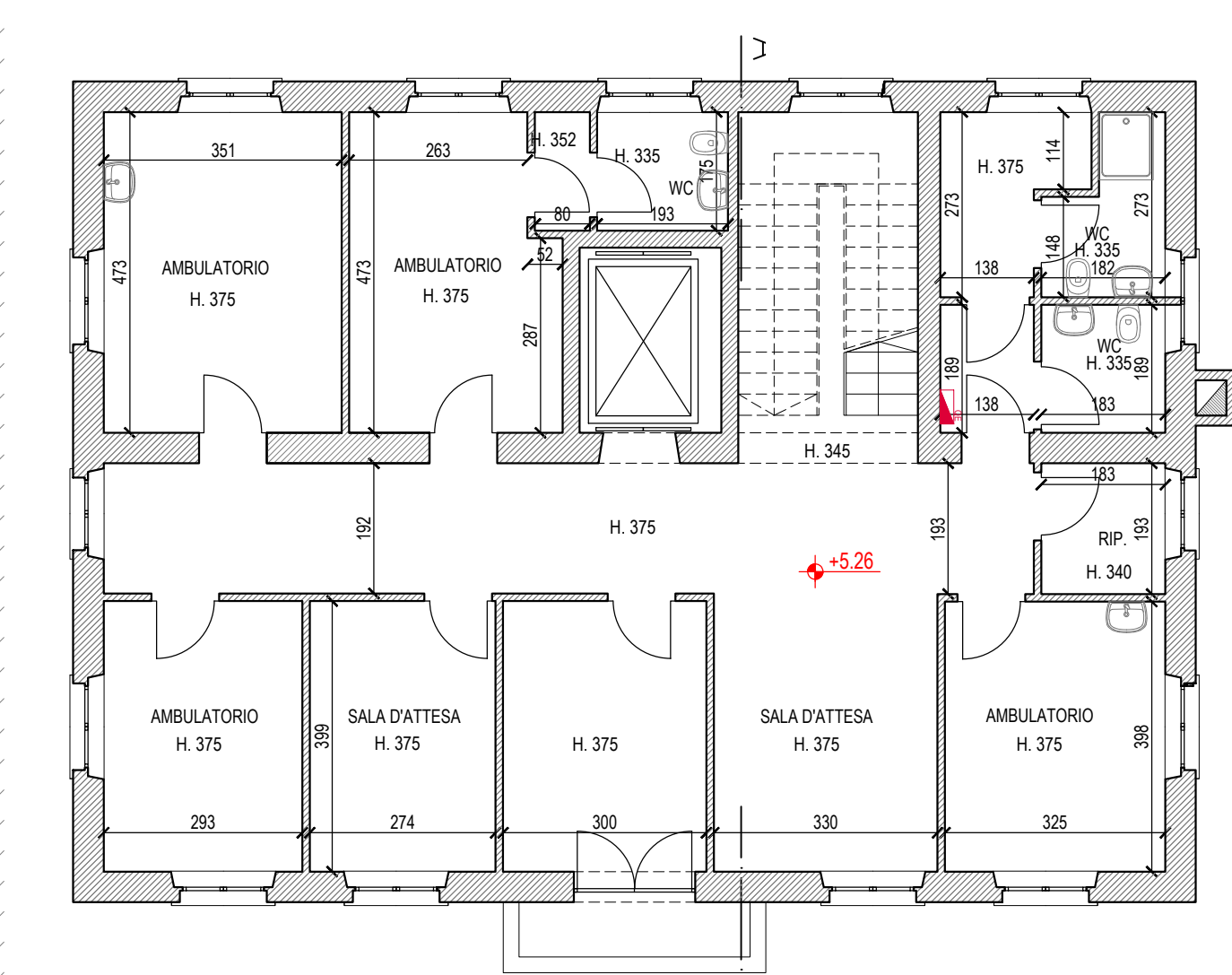
SEZIONE A-A



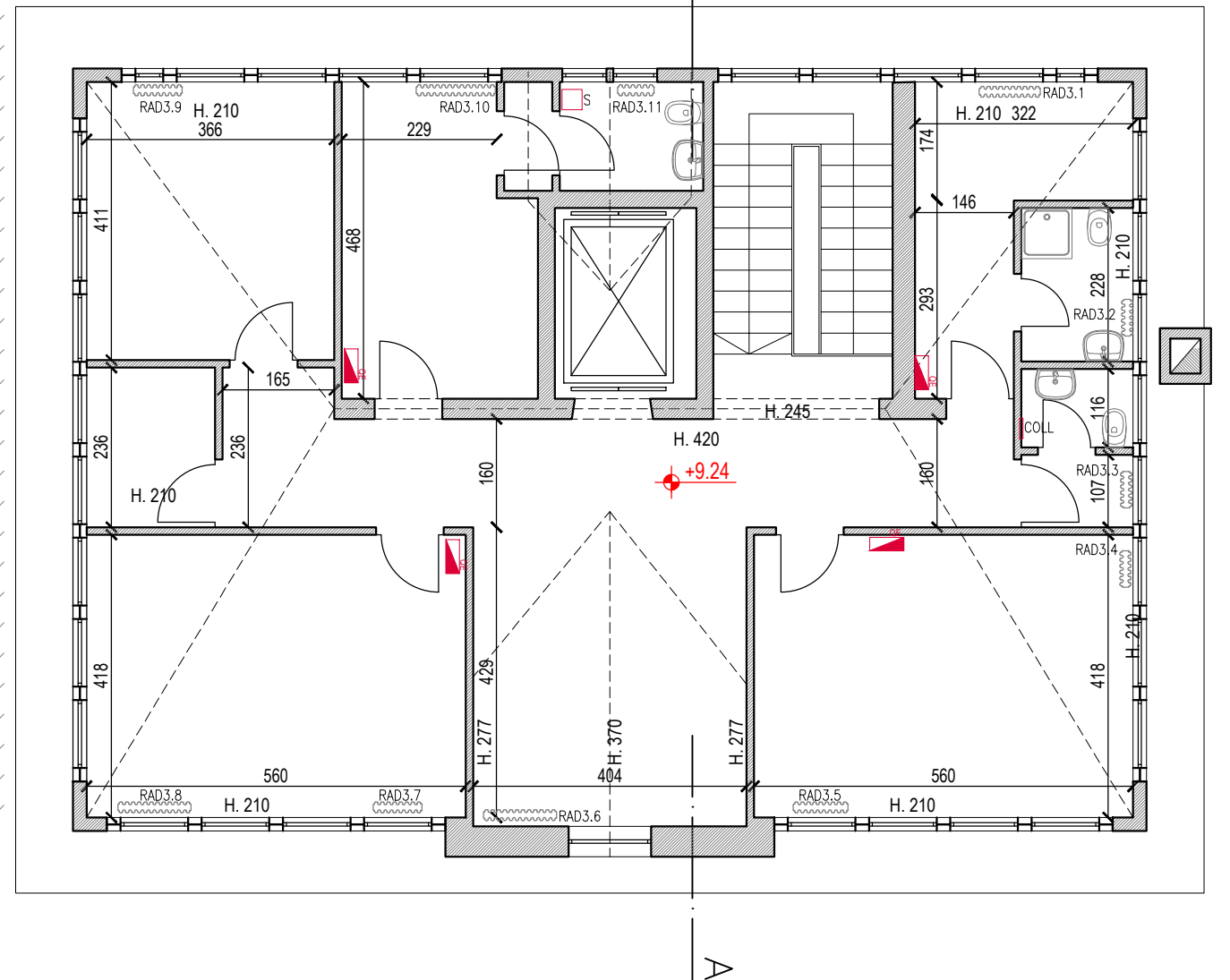
PIANTA PIANO INTERRATO



PIANTA PIANO TERRA



PIANTA PIANO PRIMO



PIANTA PIANO SECONDO

<u>Commissa:</u>		<u>Committente:</u>	
A2001		COMUNE DI VIMODRONE Vi Battisti 23, Vimodrone	
<u>Titolo:</u> MANUTENZIONE STRAORDINARIA E ADEGUAMENTO EDIFICI COMUNALI VIA BATTISTI N°23			
<u>Fase:</u> PROGETTO DEFINITIVO - ESECUTIVO		<u>Ambito:</u> CIVILE	
<u>Progettista e D.L.:</u> ing. Anna Giudici			